

NEW

GF Audio Series

TWO-WIRE COMMON APARTMENT SYSTEM

Two-Wire Common

Does not require multiconductor but two-wire cable throughout system.
Run multiple lines from Junction point up to Entrance and Residential stations 300m away.
Total wiring distance of 2,500m secured.



GF-1D Residential Station (One or two handsets per residence)

- Door release and porch light control.
- Call tone off. Blinking light indicates
- Individual door chime call with distinguishable tone
- User-Optional features;
Doctor call for auto door strike upon calling from Entrance. 'Service' button for any other user application

GF Entrance Station (Up to 5 stations per system)

- Fully modular design
- Vandal-proof construction
- Maximum of 100-call panel
- Directory backlighting

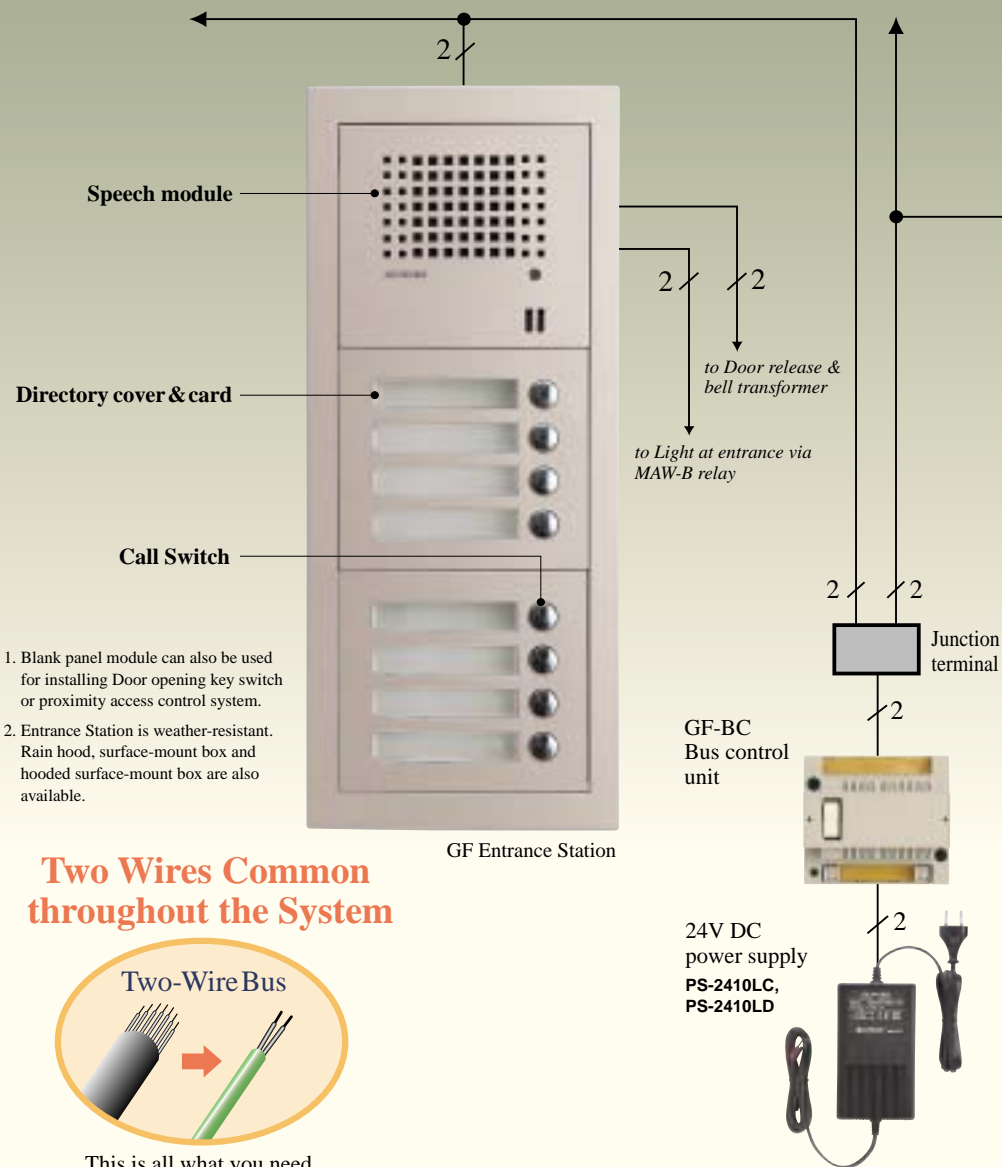
Simple and Easy Installation and Programming

To set up an entire system, make a pair of personnel positioned at each Entrance and Apartment area. There is no need to use any other extra tools. Correct programming or not, verifiable by different tone

Aiphone introduces the simplest apartment entry intercom system available on the market. The GF system features a simple 2-wire BUS connection to all room stations throughout the system, enabling

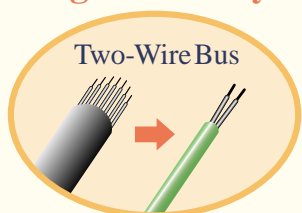
Entrance Station

Entrance Station is a vandal-proof zinc diecast panel with buttons. Fully modular design with Speech Module and Call Switch Modules. Optional Address and Blank Panels are available.



1. Blank panel module can also be used for installing Door opening key switch or proximity access control system.
2. Entrance Station is weather-resistant. Rain hood, surface-mount box and hooded surface-mount box are also available.

Two Wires Common throughout the System



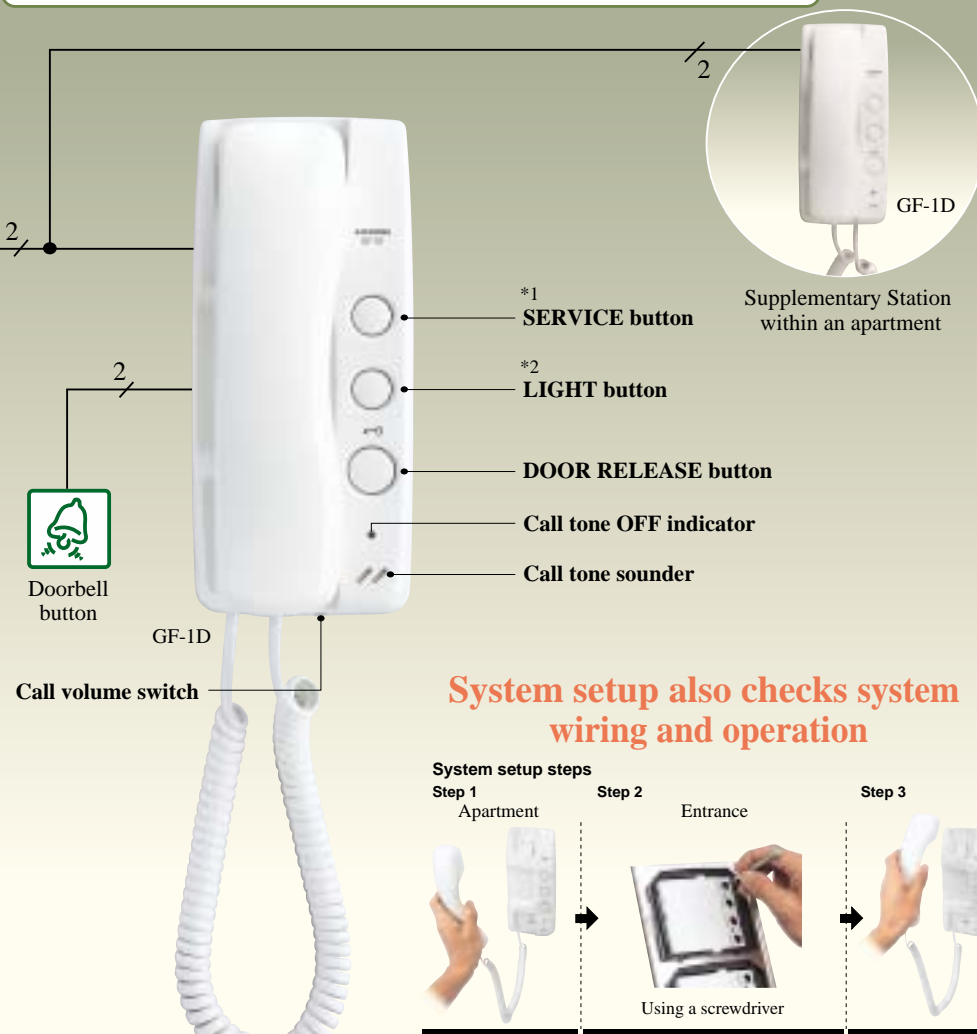
This is all what you need

Simple and Quick system set-up. The GF audio system is the ideal communication solution for new and existing apartment applications.

NEW

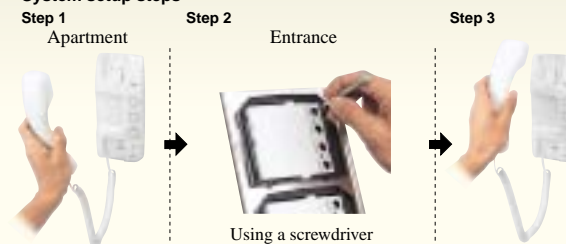
Apartment Station

Apartment Station is a compact and slim design for single-gang wall mounting. Comes equipped with *1 SERVICE, LIGHT & DOOR RELEASE buttons, and modular plug-in handset. Includes call tone cutout (w/indicator) and *2 Doctor call.



System setup also checks system wiring and operation

System setup steps



1 Apartment	2 Entrance	3 Apartment
Lift handset.		Hang up.
First station	→ Press a desired call button.	→ BEEP
Second station	→ Press the same call button.	→ BEEP, BEEP
To clear;	→ Press the button to clear and hold it down.	→ BEEEEEP (continuous)

- *1: SERVICE button can be utilized for user-optional function. (Add on parts required) Consult with your local distributor.
- *2: Doctor call: Program with LIGHT button. Door strikes automatically when called from Entrance Station.