

The background of the top section is a photograph of an electric fence with multiple strands of wire. The fence is supported by wooden posts and has white plastic insulators. In the foreground, there are some green plants and trees. The AFSCO logo is centered over the fence. The logo consists of a red octagonal shape with the word "AFSCO" in large, white, bold, sans-serif capital letters. Below "AFSCO" is the text "ELECTRIC FENCES" in smaller, white, sans-serif capital letters.

**AFSCO**  
ELECTRIC FENCES

Represented by  
**SPRINT INDUSTRIAL**



WARNING



PUNISHMENT

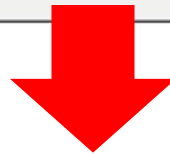
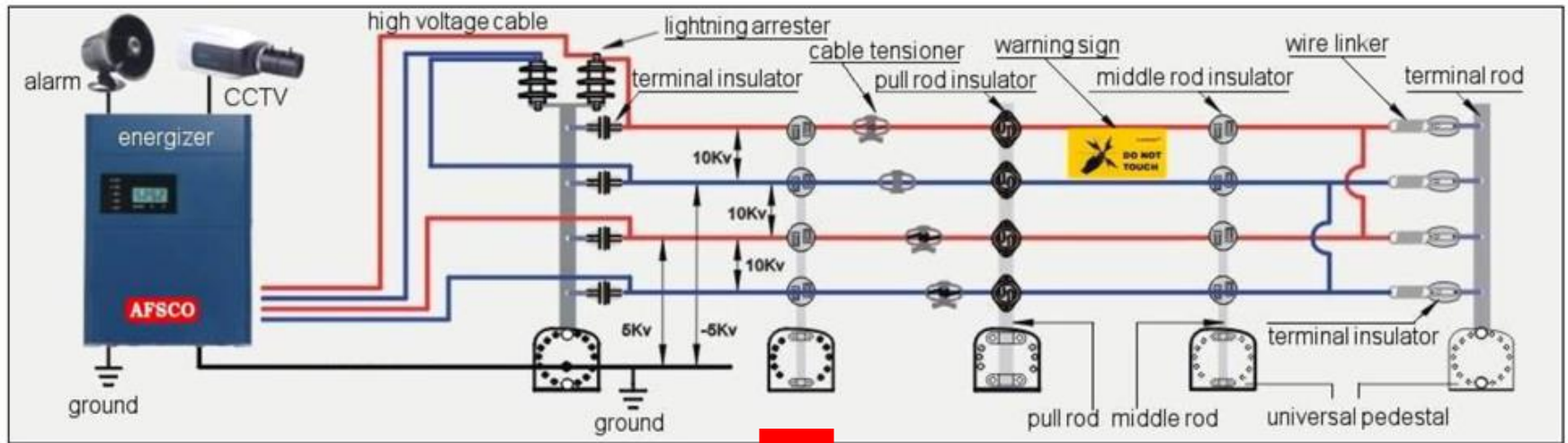


DETECTION

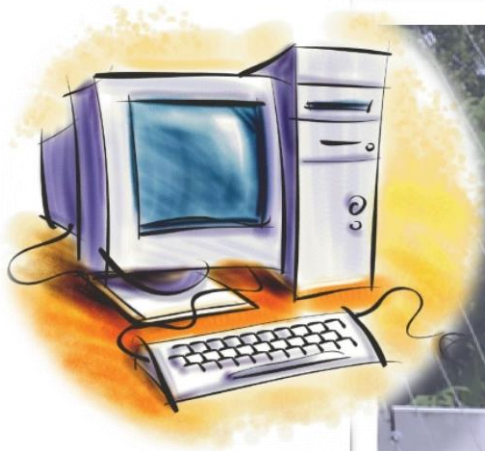
# The 1<sup>st</sup> Line of Defence

- **Warning Sign**
  - 1 0 M / Sign (every change of direction)
- **Electric Pulse (IEC/EN 60335)**
  - Either 2 wires
  - Max 5 joules, less than 0.001s
  - Interval between 1s
- **Alarm System**
  - Short (after 3 seconds)
  - Break
  - Fault

# Operational Diagram







## Real Time Display

1. E-map
2. Alarm and Recording
3. Arm/Disarm Zone(s)
4. High/Low Voltage
5. Updating Time

**Rights Assignment**

User name: 1

Permissions list

Add zone  
 Add  Modify location  Delete

Modify the zone  Select the serial port

Task settings  
 Add  Delete

All perm

Task settings

Zone number: 1 Zone Status: Arming Arming voltage: High voltage

Timing time: 9/26/2013 8:40:59 PM

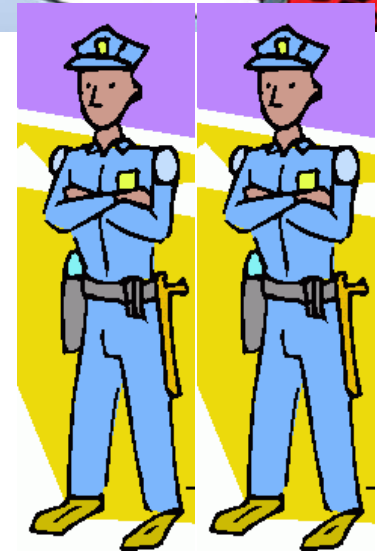
Single  Every day

| Zone number | Timing time         | Zone Status | Arming voltage | Plan Type |
|-------------|---------------------|-------------|----------------|-----------|
| 1           | 13-40-59            | Arming      | high voltage   | Every day |
| 2           | 2013-09-26 18:30:00 | Arming      | Low Voltage    | Single    |
| 1           | 2013-09-26 18:30:00 | Arming      | high voltage   | Single    |

## Remote Control

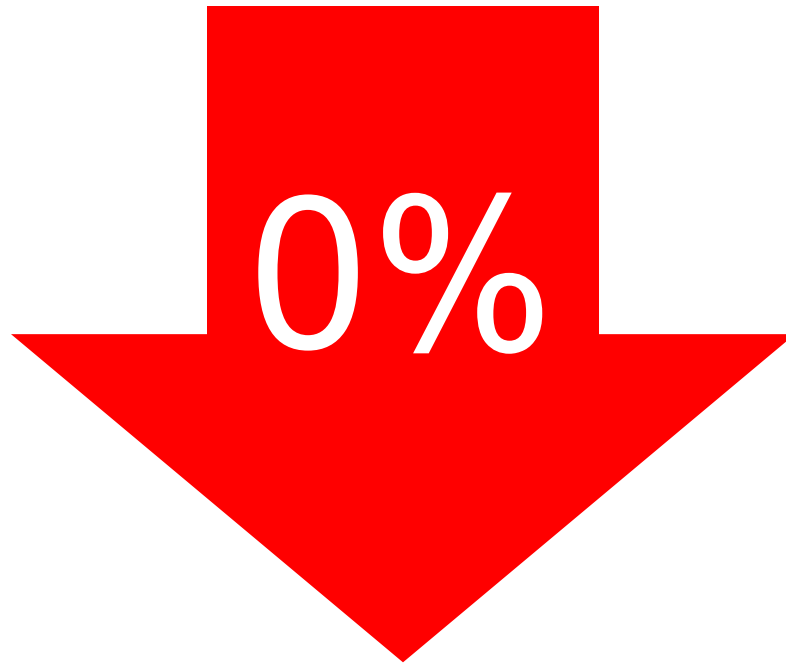
1. Zone Setting
2. Alarm Setting
3. Timer Setting
4. History Printing
5. User Management

# Why choose Electric Fence?



# Why choose Electric Fence?

The crime rate of black spots has  
been dropped to...



# How to choose Electric Fence ?

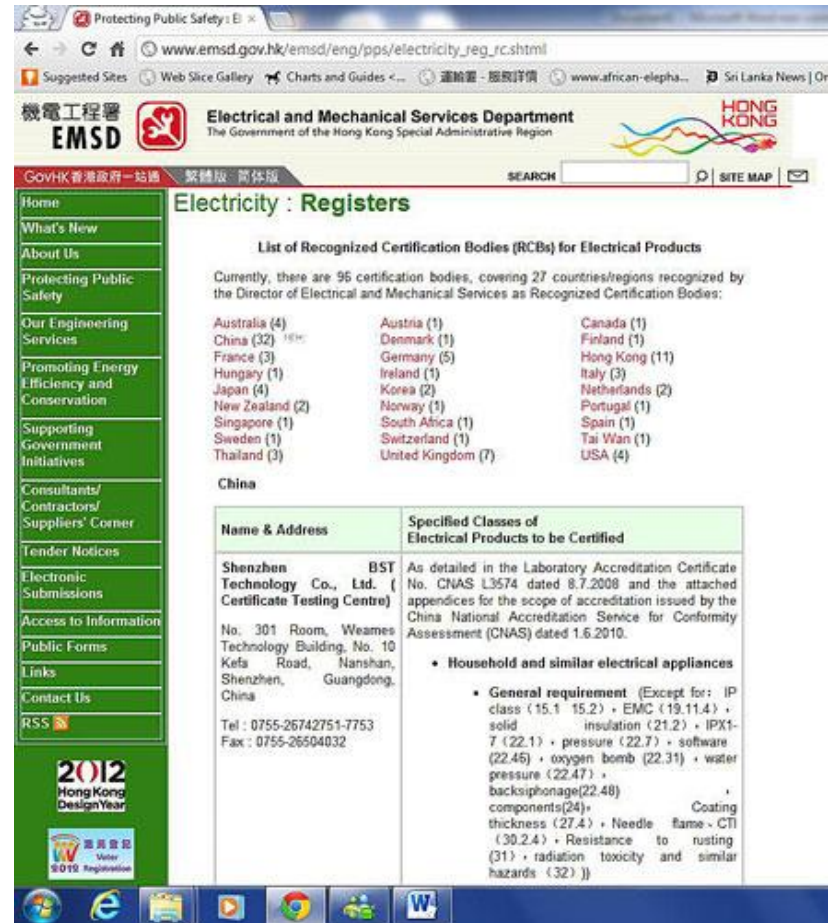
- Product
  - Safety
    - IEC/EN Standard
    - EMSD Approved Lab
    - Code of Practice
  - Security
    - Capable to System Integration
    - Various Output
    - Flexibility of Posts

# How to choose Electric Fence ?

- Service
  - Installation
    - License D Qualification
    - Capable to System Integration
    - Tailor-made Installation
    - Positioning
  - Maintenance
    - Regular Check (every 6 months)
    - Keep Stock → Loan Items
    - 24 hours on call



# Cert Sample



## EMSD approved Laboratory

# Comply with Law


## Common Law

“You are legally allowed to protect people, property and assets with “Reasonable Force”

If an intruder chooses to ignore the

“Warning Signs”

and comes into contact with the Pulsed Electrified Perimeter Security System, it is at their own risk.

機電工程署  EMSD

香港特別行政區政府 機電工程署  
香港九龍啟業街3號  
Electrical and Mechanical Services Department  
Government of the Hong Kong Special Administrative Region  
3 Ka Shing Street, Kowloon, Hong Kong  
www.emsd.gov.hk 1823

Our reference 本署檔號: EMSD/ELD-CI/21/01  
Telephone 電話號碼: 2895 4929

Your reference 來函檔號:  
16 April 2012  
Facsimile 傳真號碼:

**BY FAX (2856 1184) AND POST**

AFSCO (Asia) Limited  
5/F, 677 King's Road, Quarry Bay, Hong Kong  
(Attn.: Mr. Calvin KWOK)

Dear Mr. KWOK,

**Re: Approval Enquiry**

Reference is made to your letter dated 19.03.2012 and we would like to provide you our comment from law enforcement point of view on the Electricity Ordinance (Cap. 406).

If the electric fence you supplied obtained power from the high / low voltage electricity supply, for instance, city mains at 220V ac single phase, you are required to comply with those requirements stipulated under the Electricity Ordinance and its subsidiary regulations, including the Electricity (Wiring) Regulations and/or the Electricity Products (Safety) Regulations. However, no approval of this type of electric fence is required under the current provision of the Electricity Ordinance.

On the other hand, if the electric fence you supplied obtained power from other sources rather than from high / low voltage electricity supply (e.g. batteries), your product may have to comply with those requirements stipulated under the Consumer Goods Safety Ordinance, Cap. 456 currently enforced by Customs & Exercise Department and you are suggested to contact them for more details.

requirements stipulated under the Electricity Ordinance and its subsidiary regulations, including the Electricity (Wiring) Regulations and/or the Electricity Products (Safety) Regulations. However, no approval of this type of electric fence is required under the current provision of the Electricity Ordinance.

for Director of Electrical and Mechanical Services

# Recommended by HKPO



香港警務處防止罪案科  
Hong Kong Police Force  
Crime Prevention Bureau



本署編號 Our Ref. : (28) in CP CRM CPB 3-5/5  
電話 Tel. No. : 2860 5135  
傳真號碼 Fax. No. : 2200 4368  
日期 Date : 26<sup>th</sup> June 2012

Mr. Calvin KWOK

Sprint Industrial  
GPO Box 9794  
Hong Kong

Dear Calvin,

## Security Equipment Demonstration

Thank you for your presentation on AFSCO Electric Fences that you gave to the Crime Prevention Bureau today. It was extremely well received by our officers who found it both professional and informative. Your participation in this demonstration is of immense value to our staff, who not only greatly benefited from the presentation, but also from the professional relationships formed.

We would like to thank you again for your excellent work and professional assistance and hope to receive your ongoing support in the future.

Yours faithfully,

  
(CHIN Shing)  
for Commissioner of Police

9/F, Arsenal House, Police Headquarters, 1 Arsenal Street, Wanchai, Hong Kong  
香港灣仔區警署第一號警察總部警政大樓九樓

本署編號 : (14) CP NTN CRM 2-5/1/  
13 電話 : 2441 5041  
傳真 : 2441 5292  
電郵 : crm-ntn-rppo-tm-office@  
police.gov.hk



香港警務處  
新界北總區刑事總部  
總區防止罪案辦公室  
新界大埔安埔里六號

敬啟者：

## 邀請加入警務處新界北總區防止罪案展覽室工作委員會

警務處新界北總區防止罪案辦公室於二零零八年七月十六日在屯門井財街27號井財街政府服務綜合大樓一樓聯同保安業界十七間公司成立了一個防止罪案展覽室(簡稱'展覽室')。展覽室面積佔地50平方米,是由警務處新界北警區防止罪案辦公室負責管理。展覽室為新界地區居民提供一所設各類型保安產品的地方,讓居民透過參觀展覽室認識各種保安產品的操作和使用,以致居民可透過採用這些保安器材來加強保護個人或家居財物,避免遭受賊匪侵擾。展覽室由成立至今已運作五年,期間約超過數千名市民參觀,並有效地提升居民的個防罪意識和對"預防勝於治療"的概念加深了解。

展覽室工作委員會(簡稱'委員會')是由保安業界十七間公司組成,其主要工作為展覽室內各項保安產品的擺設進行檢討工作。現因應資訊科技的急速發展和市場上的保安產品日新越意,委員會現正就展覽室內的保安產品擺設進行檢討和更新。藉此機遇,委員會現正進行招募市場上有興趣參與展覽室工作的公司或機構申請加入委員會工作。透過其生產或代理的保安器材擺設在展覽室內,讓市民參觀和認識。展覽室展示的保安產品類別包括有:通道管理系統、零售業保安系統、車輛保安系統、機械式保安裝置、閉路電視系統、防盜警鐘系統及其他保安器材。

新界北警區刑事總部防止罪案辦公室應委員會進行招募工作發出此函件,通知貴公司有關於招募加入展覽室工作委員會一事,並誠邀貴公司回覆是否有興趣參與展覽室內的保安產品陳列工作。為此,亦希望貴公司可於二零一三年三月二十八日前填寫以下便條回覆,傳真或電郵致屯門警區防止罪案組。如有任何查詢,歡迎致電2441 9169或手電6802 8330與黃中衛先生或其職員聯絡。

順祝 業務蒸蒸日上!

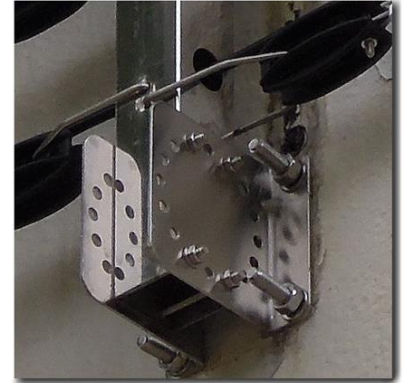
黃中衛 警署警長  
屯門區防止罪案辦公室主

二零一三年二月十九日

# AFSCO Code of Practice

- 1 Energizer for 500M length  
(for 4-stranded case)
- 1.8M high in minimum
- 3~5M for 1 Middle Pull Post
- 100mm between strands

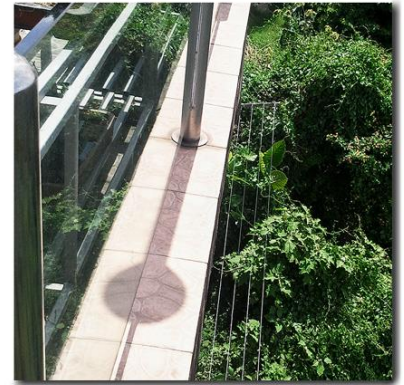




# AFSCO COMPONENTS



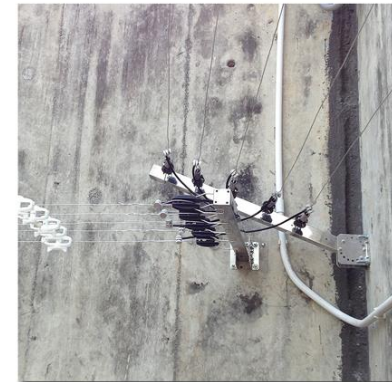




# FLAMINGO GARDEN



HLY, TAI PO



# SCENIC HEIGHTS, YUEN LONG





# KENT ROAD, KOWLOON TONG

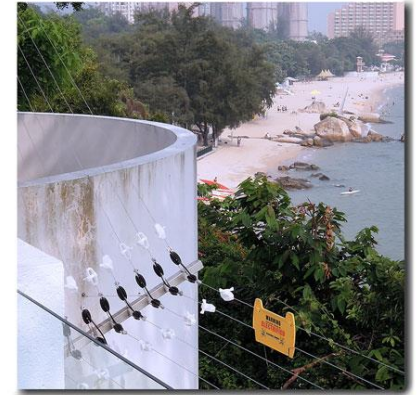
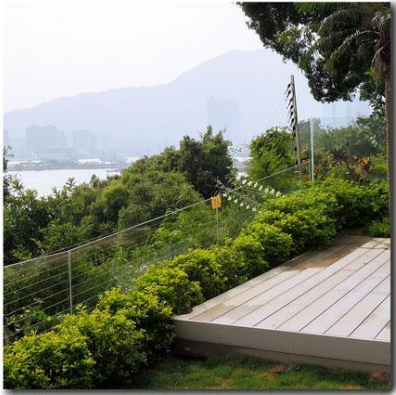


# AQUAMARINE GARDEN A, TUEN MUN





# AQUAMARINE GARDEN B, TUEN MUN



# AQUAMARINE GARDEN C, TUEN MUN



# HEADLAND ROAD





# T S Z S H A N M O N A S T E R Y , T A I P O



# PAT HEUNG, YUEN LONG





# PEAK HOUSE, TAI WAI



# MEI WO CIRCUIT, FO TAN

# Specify Electric Fence if...

- Easy to climb
  - Hillside Relief
  - Rich in Trees
- Hard to Patrol
  - Rampant False Alarm
  - Sewage
- High Risk Area
  - Extreme Weather
  - Border