

Table of Content

Keypads	2
NX-116E LED Keypad	2
NX-148E LCD Keypad.....	3
GlassBreak	4
Sentrol 5845-ID Addressable Shatterpro Glassbreak	4
Smoke Detector	5
NX-491T ESL Residential Supervised Wireless Smoke Alarm	5
Sensors	6
NX-480, 481 SAW Passive Infrared Motion Sensor	6
NX- 470 Four-Button Keychain Touchpad.....	7
NX-450, 451 SAW Door/Window Sensor	8
NX-475 Water-Resistant Pendant Panic Sensor	9
Control Panels	10
NetworX NX-8E	10

Keypads

NX-116E LED Keypad



Features:

- 16-zone LED keypad
- 55-130 mA nominal current draw
- Dimensions 6.5"W x 4.0"H x 1.3"D
- Keypad color/material—white/ABS

NX-148E LCD Keypad



Features:

- 192-zone LCD keypad
- 75-110 mA nominal current draw
- Dimensions 6.2"W x 5.3"H x 1.3"D
- Keypad color/material—white/ABS

GlassBreak

Sentrol 5845-ID Addressable Shatterpro Glassbreak



Description:

An addressable Shatterpro® II glassbreak for use with the NX-2192 PinPoint ID bus interface.

Features:

- Shatterpro's Pattern Recognition Technology™ for superior detection and false alarm immunity.
- Protects all glass types up to a standard thickness of 1/4" (0.64cm) including plate, wired, tempered and laminated glass.
- Senses through light blinds and unlined drapes. Suitable for use in quite occupied areas on the perimeter loop.

Specifications:

- Housing material: Flame retardant ABS
- Operating Voltage: 8 to 27V (as supplied by NX-2192)
- Current draw: 250 μ A typical avg. 3mA with LED momentarily on
- Microphone: Omni-directional electret
- Operating temperature: 14° to 120°F (-10° to 50°C)
- Relative humidity: 10% to 90% noncondensing
- Maximum line length: 10,000' (3km)
- Dimensions: 3.13"W x 1.7"D x 4.2"H
- Listings: FCC

Smoke Detector

NX-491T ESL Residential Supervised Wireless Smoke Alarm



Features:

- Photoelectric smoke sensor
- Built-in sounder
- Built-in fixed temperature/rate-of-rise heat sensor
- Learn mode technology
- Tamper switch
- Field-replaceable optical chamber
- LED shows visual status
- Drift compensation increases immunity to dust
- Large test and silence button
- Clean Me™ self-diagnostics feature performs a daily full diagnostic test

Specifications:

- 40°F to 100°F operating temperature
- Two 3-Volt DC lithium batteries (included)
- Sensitivity 2.3%±0.8%
- Drift compensation adjustment: 0.5%/ft max.
- 5.5" diameter x 2.3" deep (detector)
4.88" diameter x 0.38" deep (base)
- 6.5-year battery life
- UL 217 (Residential) listing - PN 60-848-01-95(ITI)/NX-491T

Accessories:

- **60-733** 3-Volt DC 2/3 A lithium battery - 6/pk
- **211** Replaceable optical chambers for ESL smoke detectors - 10/pk

Sensors

NX-480, 481 SAW Passive Infrared Motion Sensor



Description

The NX-480 SAW PIR detects movement inside an enclosed structure.

Features

- Use in large rooms, narrow corridors, and stairwells
- 3-minute motion lockout to conserve battery life
- Optional pet lens

Specifications

Color: White

Dimensions: 2.50" W x 3" H x 2" D

Battery: 1.5 VDC AA alkaline battery

Battery life: 3-4 years

Installation: wall mounting

Compatibility: Simon and Quik Bridge Loop Receiver

NX- 470 Four-Button Keychain Touchpad



Description

These small, powerful touchpads provide convenient portable control over security system, lights, panic, and garage door functions of your security system.

Features

- Light control capability
- Auxiliary panic button
- Key chain ring included

Specifications

Color: Black

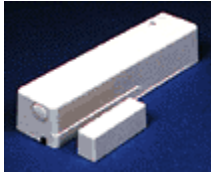
Dimensions: 1.4" W x 2.25" H x 0.38" D

Battery: 12 VDC, 33 mAh alkaline (included)

Battery life: 5-8 years

Operating temperature: 10°F to 120°F

NX-450, 451 SAW Door/Window Sensor



Description

Use door/window sensors to protect anything that opens and closes, such as doors, windows, jewelry cases, and gun cabinets. The sensor detects intrusion with a magnet and reed-switch mechanism that signals an alarm during unauthorized entry.

Features

- Installs on anything that opens or closes
- For low and average traffic areas

Specifications

Magnet included

Color: White or brown

Dimensions: 1.13" W x 4.25" H x 0.88" D

Batteries: 2 AAA alkaline

Battery life: 5-8 years

Technology: SAW (Surface Acoustic Wave)

NX-475 Water-Resistant Pendant Panic Sensor



Description

Designed to go just about anywhere, this sensor allows you to activate a 24-hour emergency alarm whether you're inside or in the yard.

Features

- Water and shock resistant
- Recessed panic button prevents false alarms
- Can be worn around neck
- Built-in belt clip allows sensor to be attached to belt or purse
- Can be supervised
- Wall mounting option

Specifications

Necklace cord (included), belt clip (included), and wall mounting (bracket sold separately)

Color: White

Dimensions: 1.75" W x 2.25" H x 0.75" D

Batteries: 3.5 VDC 1/2 AA lithium

Battery life: 5-8 years

Control Panels

NetworX NX-8E



The most versatile NetworX control available, the NX-8E offers 8-192 zones. Ideal for home automation to medium-sized commercial installations, the NX-8E is flexible enough to meet the most demanding applications.

UL 609*, UL635, UL 985, UL 1023, UL 1610, UL 1635, UL 1637

*The UL 609 rating only applies when using the NX-003C UL commercial enclosure

Features:

- Expandable to 192 fully programmable zones
- All zones programmable as fire or burglary
- Maximum 24 keypads
- Wireless expansion up to 192 zones
- Up/downloadable with competitor lockout
- Up to 8 partitions
- Maximum 8 keypads per partition
- 2-wire or 4-wire smoke detectors
- Automatic arming with auto retry
- Assign zones to one or multiple partitions
- 240 four digit user codes
- Zone activity monitor
- Late-to-close/early-to-open reporting
- Built-in RS-232 serial interface for printer or direct computer connect (adapter cable needed)
- 2 on-board relays (one Form A, One Form B)
- 2 separately ptc protected auxiliary power outputs
- 2 amp power supply

Partitions

- Up to 8 true partitions
- Separate account code for each partition
- User code assignment to multiple partitions
- Separate feature selections for each partition
- Independent entry/exit delays for each partition

512 Event Log

- Includes date,time,event and partition number

Communication

- SIA and contact ID formats
- Supports all major formats
- Event activated pager format
- Flexible auto-test reports
- Failure to communicate reporting
- Reports entering/exiting program mode
- Will communicate alarm events during programming